



# INSTALLATION INSTRUCTIONS

57-1506-1  
Jeep Grand Cherokee  
1993-97 V8-5.2L  
1998 V8-5.2L, 5.9L

### TOOLS NEEDED:

- 7/16" wrench or socket
- 13mm socket
- 3/4" wrench or socket
- Flat blade screwdriver
- 5mm allen wrench
- 4mm allen wrench
- 10mm socket
- ratchet

### TO START:

1. Turn the ignition OFF and disconnect the vehicle's negative battery cable.



2. Loosen the nut at the intake plenum as shown.



3. Disconnect the factory crankcase vent at the airbox.



4. Unclip the six over center clamps and remove complete upper intake assembly as shown.



5. Using a 1/2" socket, loosen and remove the three bolts that secure the airbox base.



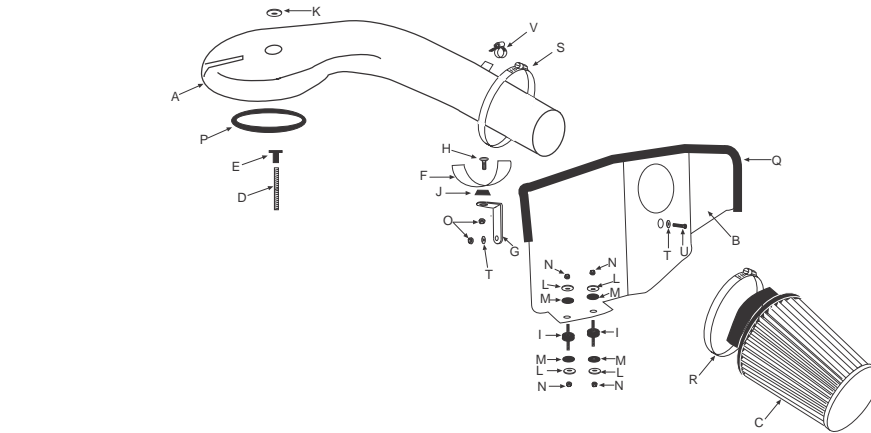
6. Remove the airbox base as shown.



7. Using a 7/16" socket, loosen and remove the stud assembly as shown.



8. Install the two rubber isolator stand off using the provided hardware as shown.



9. For maximum air, using a razor blade, cut the rubber splash guard to fully expose air from the grill.



10. Install the heat shield with the hardware provided.



11. Install the trim seal provided as shown above.



12. Assemble the saddle to the bracket using the hardware provided.



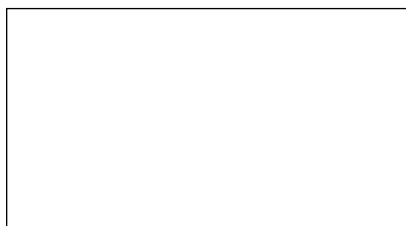
13. Assemble the saddle/bracket to the heat shield with the hardware provided. **NOTE:** Do not fully tighten as some up or down adjustment may be necessary.



14. Install the provided gasket onto the throttle body as shown above. **NOTE:** For extreme off road or dusty conditions, it is recommended that RTV silicone be applied to both sides of the gasket when it is installed.



15. Install the provided stud into the threaded hole on the throttle body and tighten completely.



16. Install the provided stand off onto the stud as shown above.



17. Install the K&N intake tube as shown.



18. Using the factory nut and the provided fender washer, secure the intake tube onto the throttle body.



19. Install the hose clamp provided, around the saddle and intake tube and tighten.



20. Install the crankcase vent hose onto the small fitting on the intake tube and secure with hose clamp provided.



21. Align and tighten the saddle/bracket to the heat shield.



22. Install the filtercharger element onto the intake tube and tighten using the hose clamp provided.

23. Re-connect the vehicle's negative battery cable. Double check to make sure everything is tight and properly positioned before starting the vehicle.

24. The C.A.R.B. exemption sticker, (attached), must be visible under the hood, so that an emissions inspector can see it when the vehicle is required to be tested for emissions. California requires testing every two years, other states may vary.

25. It will be necessary for all FIPK's to be checked periodically for realignment, clearance and tightening of all connections. Failure to follow the above instructions or proper maintenance may void warranty.

### ROAD TESTING:

1. Start the engine with the transmission in neutral or park, and the parking brake engaged. Listen for air leaks or odd noises. For air leaks secure hoses and connections. For odd noises, find cause and repair before proceeding. This kit will function identically to the factory system except for being louder and much more responsive.

2. Test drive the vehicle. Listen for odd noises or rattles and fix as necessary.

3. If road test is fine, you can now enjoy the added power and performance from your kit.

4. K&N suggests checking the Filtercharger element periodically for excessive dirt build-up. When the element becomes covered in dirt (or once a year), service it according to the instructions on the Recharger service kit that is included in this kit.

### PARTS LIST:

A	Intake tube	1
B	Heat shield	1
C	Filtercharger element	1
D	Stud	1
E	Spacer	1
F	Saddle	1
G	Bracket	1
H	Flat head allen bolt	1
I	Rubber isolator stand off	2
J	Conical nylon washer	1
K	Fender washer 1.25"od	1
L	Fender washer 1"od	4
M	Rubber washer	4
N	1/4-20 nylock nut	4
O	6mm nylock nut	2
P	Gasket	1
Q	Trim seal	1
R	Hose clamp #64	1
S	Hose clamp #60	1
T	Flat washer 5/8"od	2
U	6mm allen bolt	1
V	Hose clamp #6	1