

PLEASE READ THE INSTRUCTIONS BEFORE FITTING THE KIT
If you have a problem, however small, call our Technical Department.
Tel:- 01925 636950. Fax:- 01925 418948. Monday to Friday 9am - 5pm.

- 1** Remove the complete air filter assembly and remove the plug. Release the hose clip, and remove the mass air sensor (**MAS**). Lift the rubber hose towards the fan and secure whilst fitting the rubber mounting.
- 2** Fit the rubber bobbin to the front air box mounting, **Drawing A**, and attach the bracket to the bobbin.
- 3** Attach the bracket to the **MAS** using the spring washer supplied and the original screw, **Drawing B**.
- 4** Fit filter to **MAS**, rotate until the K&N logo is straight and then tighten the clip until the filter just rotates, then one full turn. **No more** Do not overtighten.
- 5** **Cold air system**
Carefully expand the hose to approx. 33"/84cm. Release the towing hook cover from the front spoiler. Feed the flexi hose down through the hole in the inner wing, under the towing hook to finish in the front air intake facing front. Using the plastic ties attach the cold air hose to the power steering pipe and the towing hook, **Drawing C & D**. Finish the hose 4"/10cm from the filter, **no nearer**.
- 6** **Tuning**
No adjustments are required.
- 7** **Filter maintenance**
Under normal conditions clean and reoil the filter at approx. 40000 miles/65000 km.
Use only K&N cleaner and oil and follow the instructions carefully.

K&N filters are pre oiled ready to fit.

The advantages of K&N's cold air intake system
Cooler air, being denser, will show positive improvements in power over filter systems that draw hot air from the engine bay.

This Kit Should Contain :-

- 1 x Clamp-on filter.
- 1 x Cold air hose assembly.
- 1 x Instruction sheet.
- 1 x Instruction pack:-
 - 1 x Filter maintenance sheet.
 - 1 x K&N window sticker.
 - 1 x Million mile warranty card.
 - 1 x Leaflet.
- 1 x Fixing kit containing :-
 - 1 x Rubber mounting.
 - 2 x $\frac{5}{16}$ " UNF nuts.
 - 2 x $\frac{5}{16}$ " spring washers.
 - 1 x Metal washer.
 - 1 x 6mm spring washer.
 - 2 x Plastic cable ties (14" long).
 - 1 x Hose clip size 60.
 - 1 x Bracket.

**IMPORTANT INSTRUCTIONS
FOR ROUND ENTRY
CLAMP ON AIR FILTERS**

Gently tighten the hose clip to the point where the filter will just rotate on the pipe or intake flange. Reposition the K&N logo straight, then **give the clip two turns i.e. 360 , no more.**

FITTING YOUR OWN 57i KIT

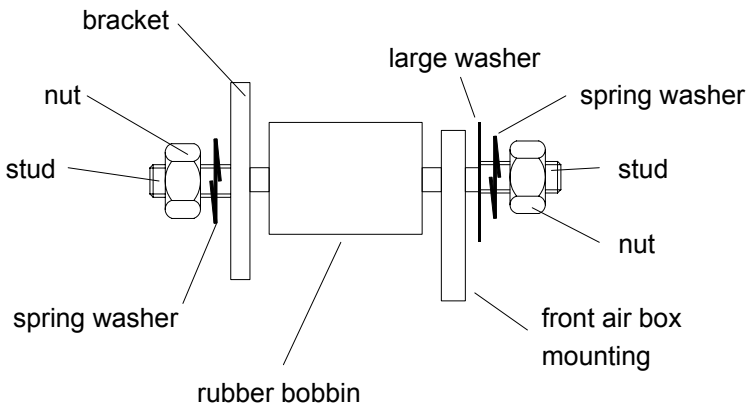
If not, **it is essential** that the person fitting the kit (e.g. mechanic) **carefully follows these particular instructions** even if he has fitted K&N kits before. This will save you both time and money. Kits incorrectly fitted may show a loss in performance e.g. the positioning of the essential cold air hose, (flexi expandable and rubber hoses are used).

A final check under the bonnet, by yourself, with the instructions, would seem sensible.

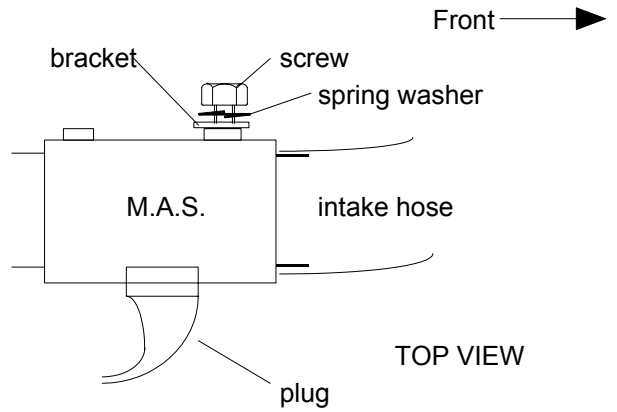
PLEASE NOTE:

On some Turbo cars there can be an increase in noise levels on deceleration once the airbox has been removed. This is normal.

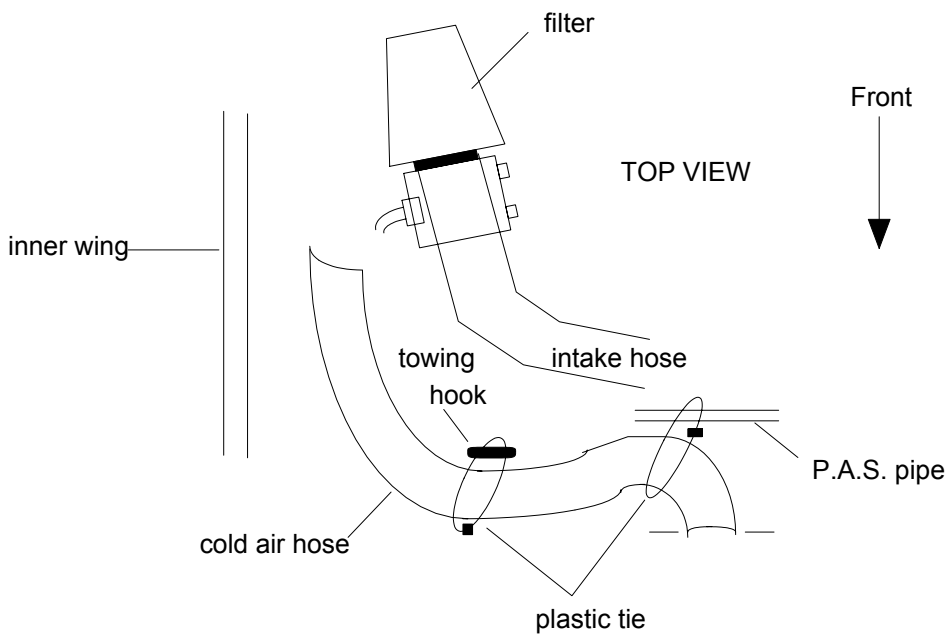
Drawing A



Drawing B



Drawing C



Drawing D

