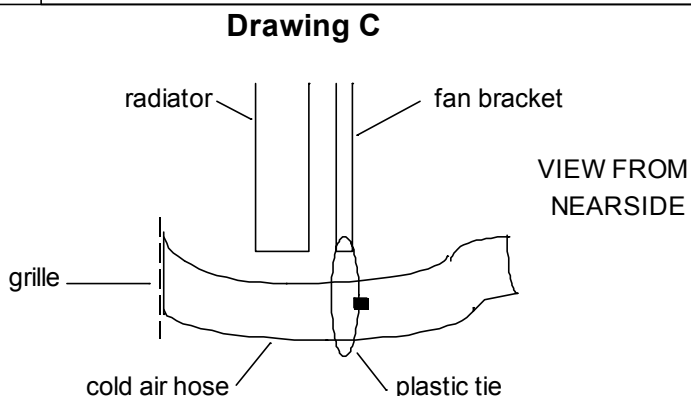
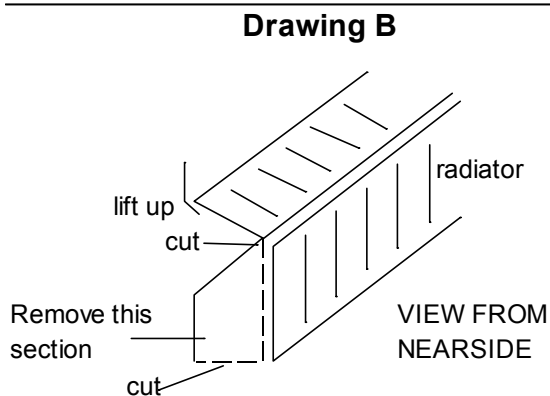
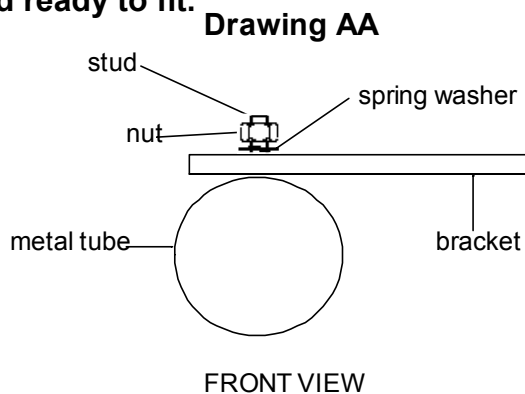
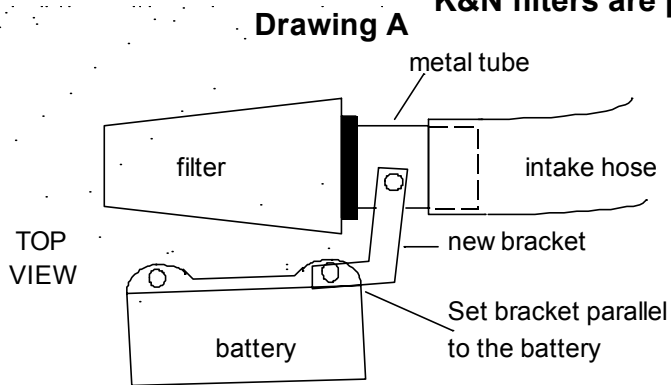


PLEASE READ THE INSTRUCTIONS CAREFULLY BEFORE FITTING THIS KIT.
If you have a problem, however small, call our Technical Department.
 Tel:- 01925 636950. Fax:- 01925 418948. Monday to Friday 9am - 5pm.

- 1 Remove the two screws attached to the battery carrier and lift out the complete air filter assembly.
- 2 Leave in place the intake hose attached to the throttle body.
- 3 **Drawing AA.** Fit the bracket to the top of the metal tube using the stud, nut and spring washer. Fit the **long end** of the tube into the intake hose.
- 4 Fit the bracket to the rear hole in the battery carrier, using the M8 hex screw and washer.
- 5 Fit the filter to the tube with the intake at the bottom. Check all round for clearance and adjust until the K&N logo is straight before tightening in place. Tighten the clip until the filter just rotates, then give one full turn (360 degrees) No more **Don't overtighten the clips.**
- 6 **Drawing B.** Release plastic flap and lift up, cut away section of plastic as shown.
- 7 Using a plastic tie attach the rubber cold air hose to the fan bracket. **Drawing C.**
- 8 **Tuning.**
CAT Cars. No adjustments are required.
 An increase in fuel may be required, if further engine modifications are to be carried out
- 9 **Filter Maintenance.**
 Under normal conditions clean and reoil the filter at approximately 40,000 miles 65,000 km.
Use only K&N cleaner and oil and follow the instructions carefully.

K&N filters are pre-oiled ready to fit.



This Kit Should Contain :-

- 1 x Clamp-on filter.
- 1 x Hose clip size 44.
- 1 x Bracket.
- 1 x Metal tube.
- 1 x Rubber cold air hose.
- 1 x Instruction sheet.
- 1 x Instruction pack:-
 - 1 x Filter maintenance sheet.
 - 1 x K&N window sticker.
 - 1 x Million mile warranty card.
 - 1 x Leaflet.
- 1 x Fixing kit containing :-
 - 1 x Plastic cable tie (14" long)
 - 1 x M8 x 16 hex screw
 - 1 x $\frac{5}{16}$ spring washer
 - 1 x M6 nut
 - 1 x 6mm spring washer

FITTING YOUR OWN 57i KIT

If not, **it is essential** that the person fitting the kit (e.g. mechanic) **carefully follows these particular instructions** even if he has fitted K&N kits before. This will save you both time and money. Kits incorrectly fitted may show a loss in performance e.g. the positioning of the essential cold air hose, (flexi expandable and rubber hoses are used).

A final check under the bonnet, by yourself, with the instructions, would seem sensible.

The advantage's of K&N's cold air intake system

Cooler air being denser will show positive improvements over systems that draw hot air from the engine bay.